

TECHNICAL BULLETIN # 29

November 30, 2015

To: All re-calibrated RFXpert Units Users - CRITICAL

Re: Configuration file upgrade

EMSCAN introduced a new calibration method in 2014 that improved the accuracy of the TRP and efficiency measurements of the RFX and RFX2 systems.

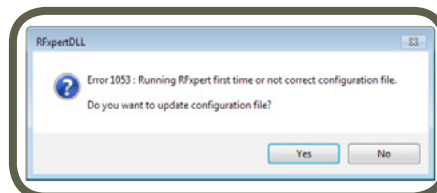
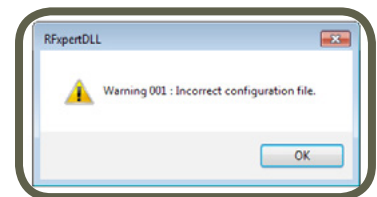
The new configuration file which now reflects the new calibrations' values is unique to each unit and stored in the unit's hardware. A configuration file is however always formatted the same way with the unit's serial number as the identifier and this will cause an issue for a recalibrated unit which is a unit that was already in use by the customer and sent back for re-calibration.

When using an RFXpert software installed for the first time on a computer, the software will request the configuration file to be uploaded from the RFXpert hardware to the computer. When using an already installed RFXpert software, the old configuration file will still be present in the computer; note that updating the RFXpert software application will preserve such configuration file. When the re-calibrated RFXpert is then connected to the PC and the RFXpert application opened, the software application will first verify if the existing configuration file name is matching the unit's identifier; if there is a match the RFXpert application will unfortunately not upload the configuration file even if it is in fact new.

To work around this problem, all customers with a recalibrated RFX or RFX2 must delete the existing configuration file before connecting their RFXpert to their computer. Once the unit is reconnected, the absence of a stored configuration file it will force the software to upload the new configuration file from the re-calibrated RFXpert unit.

Please follow the following procedure:

1. Do not connect your RFXpert system to your computer at this time
2. Go to where the previous configuration file is stored
C:\Users\UserName\AppData\Local\Temp\RFXpertConfig\config.cfg
3. Delete config.cfg
4. Connect your RFXpert system to your computer
5. Start the RFXpert application software
6. The RFXpert application software will prompt for configuration file upgrade
7. Click OK and a second message will pop up as follows



Click on Yes

It will take a few minutes for the configuration file to be uploaded from the RFXpert to the computer.

This process should be repeated on all the computers that already have an installed version of the RFXpert software. Once the update process has been completed on a computer, it does not need to be repeated.

**RFXpert**[™]