

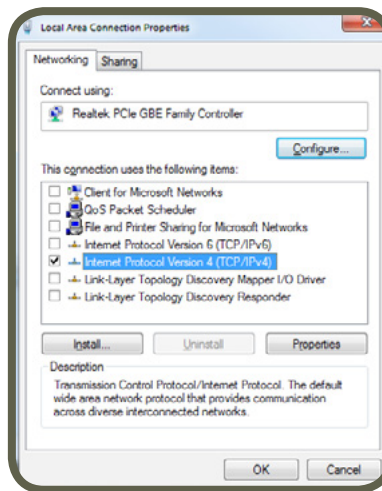
## TECHNICAL BULLETIN # 28

November 13, 2015

To: All EMxpert All EHX+ and ERX+ units

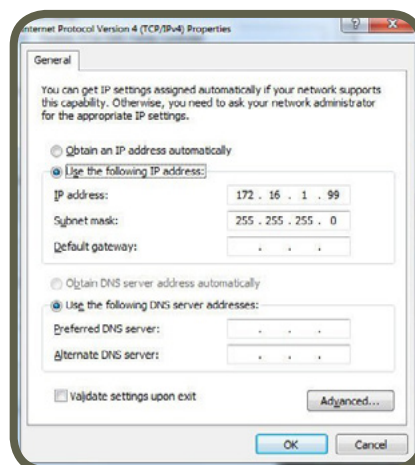
Re: Firmware upgrade

1. Connect a LAN cable provided into the LAN port of the ERX+ or EHX+ and the LAN port of a computer running Windows 7 or later. Attach the power cable and turn the device on. The ERX+ or EHX+ LED will blink several times and turn green.
2. LED has turned solid green go to the control panel in Windows and access network configuration.  
Control Panel-> Network and Sharing Center->Change Adapter Settings-> Local Area Connection



Select the “Internet Protocol Version 4 (TCP/IPv4)” and click on Properties.

Click “Use the following IP address” and enter the following information:



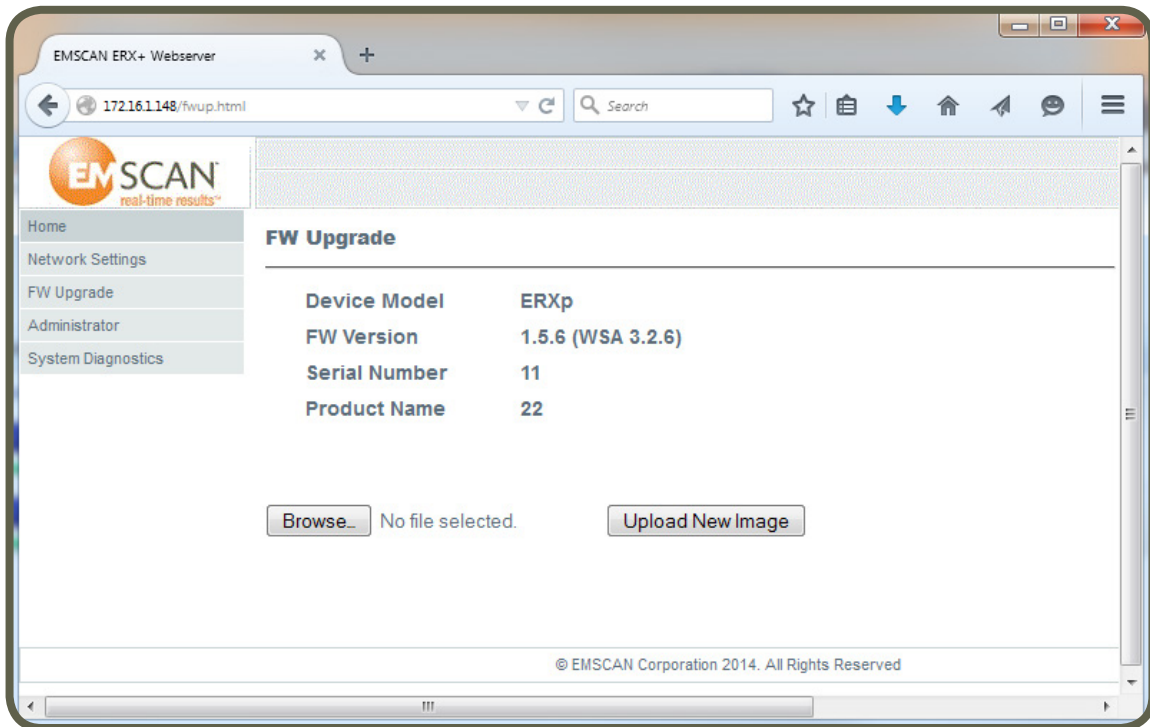
Click OK

3. Obtain the latest ERX+ or EHX+ firmware from EMSCAN. You will need to unzip this file and obtain two firmware images.

emsrv\_a5.bin

emsrv\_m4.bin

4. Open your favorite browser, **except Internet Explorer** and navigate to the LAN address 172.16.1.148/fwup.html. We recommend you use Firefox or Google Chrome as your browser for this step.



This web based interface will allow you to update the firmware of the ERX+ | EHX+. The firmware images you obtained in step 3 will be copied directly to the ERX+ | EHX+ using this interface.

5. Click on the Browse button and navigate to the folder that has the two files: emserv\_m4.bin and emsrv\_a5.bin.

Select the emsrv\_m4.bin and click on "Upload New Image".

LED light will flash indicating firmware being updated. Wait until LED light settles at green then proceed to the next step.

Select the emsrv\_a5.bin and click on "Upload New Image".

Wait until the LED light settles to a steady green then proceed to the next step.

6. Reboot your ERX+ | EHX+.

You have just upgraded your ERX+ | EHX+ firmware.

Repeat Step 4 to verify proper firmware version.

**Note:**

It's very important that **FIRST** emserv\_m4.bin and then emsrv\_a5.bin is uploaded.