

## TECHNICAL BULLETIN # 9 v2.1

March 15, 2014

To: EMxpert Users with Keysight X-Series Analyzers (EXA, CXA or PXA)

Re: Specific Settings

This technical bulletin is valid for all Keysight X-Series analyzers (CXA N9000A, EXA N9010A, MXA N9020A or PXA N9030A)

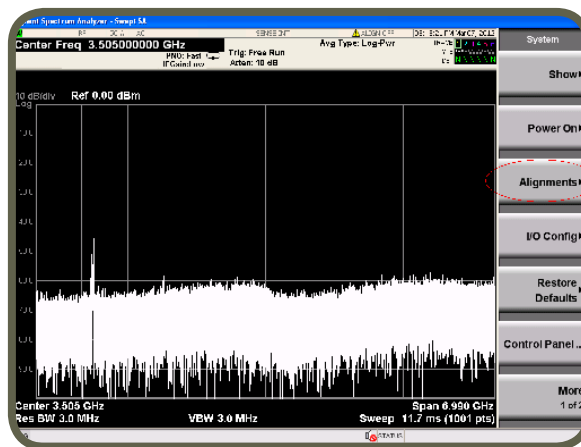
If you are using an Keysight X-Series analyzer with EMxpert please go through the following settings

### On the unit itself

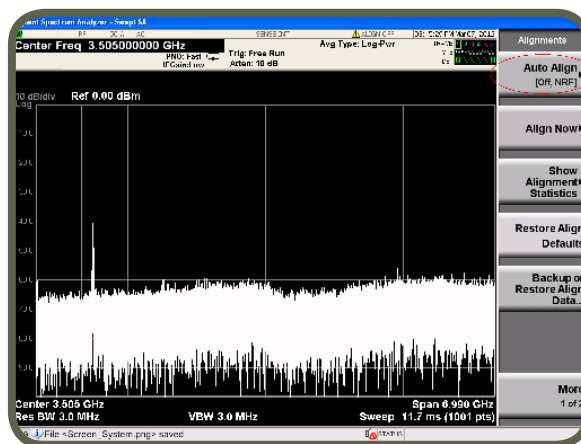
- If you are using an Ethernet crossover cable to connect the PC to the spectrum analyzer, you have to set your spectrum analyzer to the static IP address 172.16.1.148/255.255.0.0.

Login in the analyzer with username Administrator and password agilent4u and change network settings to static and IP address to 172.16.1.148. You may have to restart the analyzer.

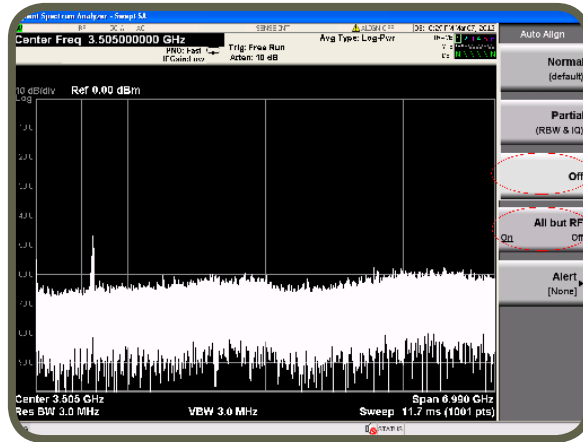
- Press **System** button on the panel and select **Alignments** on the analyzer screen



- Select **Auto Align**

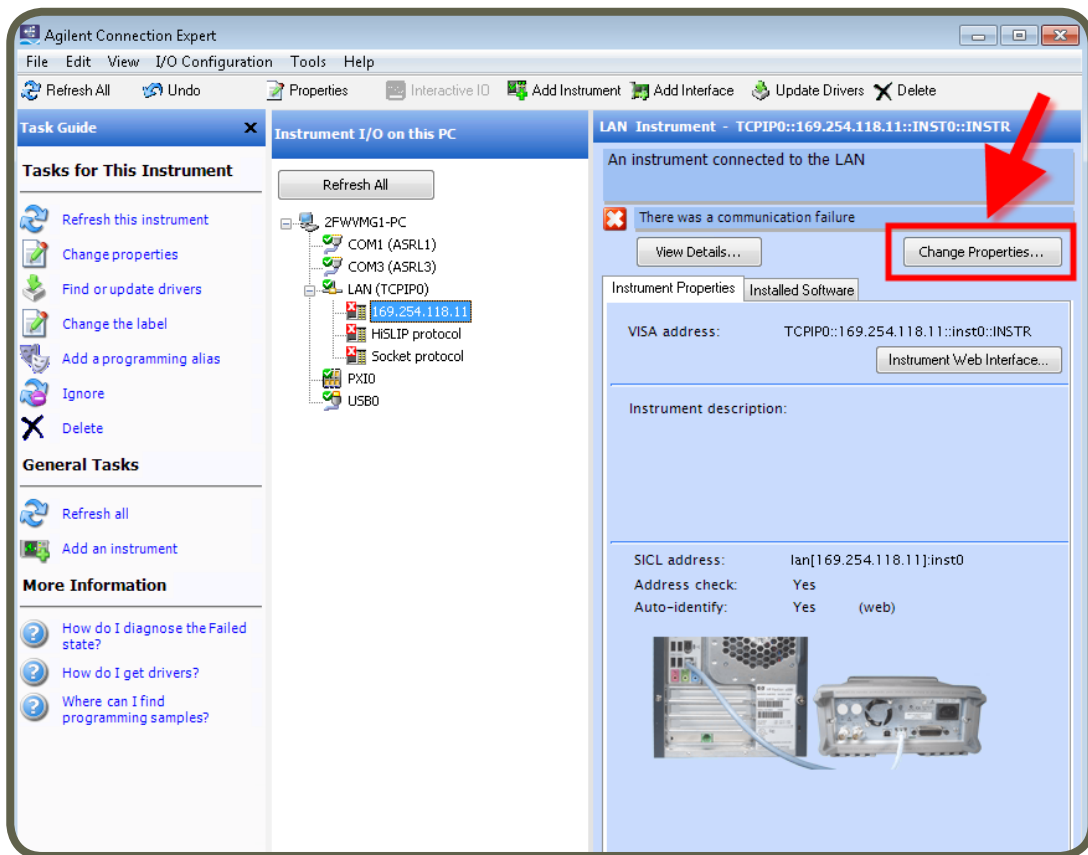


- Select **Off** and turn **All but RF On**

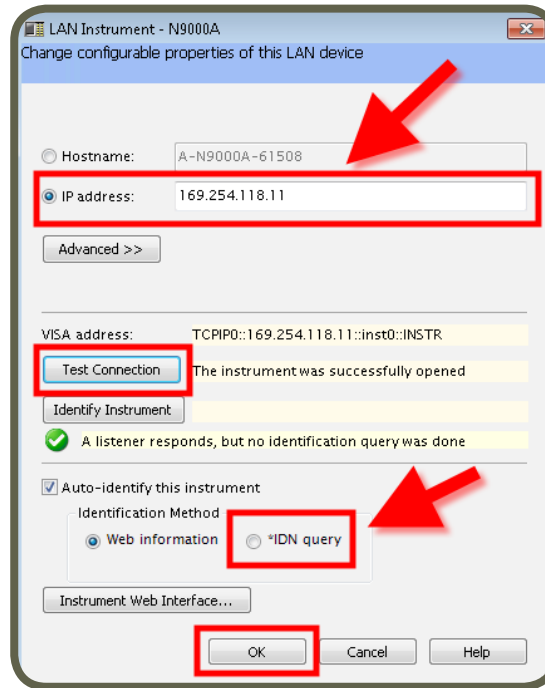


In Keysight IO

- If after “Add Instrument” or “Refresh All” the check mark next to your analyzer is not set to green click on Change Properties



- Enter the IP address and click on Test Connection



- Once it is successfully connected select IDN Query and then OK
- The following menu will then come up. Select HiSlip only

